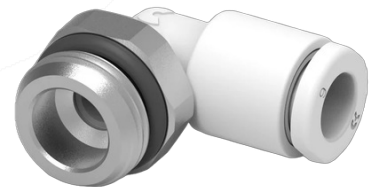


SC1-2M-12, 1/2" male to 12mm OD push fit, 90° swivel elbow

DESCRIPTION

2x 1/2" male to 12mm OD with 90° swivel elbow push fit for semi rigid tubing



CAT. NUMBER

SC1-2M-12 1/2" male to 12mm OD push fit, 90° swivel elbow



ORCA

ORCA EU

Closed loop refrigerated circulator

A new sustainability focused, energy-efficient recirculating chiller designed to replace tap-water-based cooling in laboratories.

Key Features

- Perfectly designed to replace tap water-based cooling solutions in labs and slash utility spend ...

[read more](#)