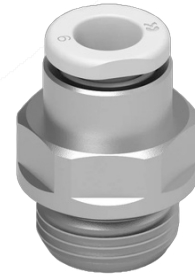


C1-2M-10, 1/2" male to 10mm OD push fit

DESCRIPTION

2x 1/2" male to 10mm OD push fit for semi rigid tubing



CAT. NUMBER

C1-2M-10

1/2" male to 10mm OD push fit



ORCA

ORCA EU

Closed loop refrigerated circulator

A new sustainability focused, energy-efficient recirculating chiller designed to replace tap-water-based cooling in laboratories.

Key Features

- Perfectly designed to replace tap water-based cooling solutions in labs and slash utility spend ...

[read more](#)