

# UP-168, platform

## DESCRIPTION

Universal platform with clamps can accommodate flasks or bottles of different volume sizes. Clamps are not included with platform and need to be ordered separately.

## SPECIFICATIONS

Overall dimensions (W×D×H)

360 x 400 mm

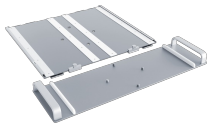


## CAT. NUMBER

BS-010135-JK

Platform UP-168

## ACCESSORIES



**P-EX**  
BS-010173-CK  
platform exchange set

Platform Exchange Set allows for faster replacement of flat platforms. Thanks to the platform sliding system, it is now possible to install 4 × 2l flasks in ES-20/60, ES-20/80, ES-20/80C ...

[read more](#)



**SPML**  
BS-010135-MK  
double-sided adhesive strips

Double-sided adhesive strips. **SPML** is compatible with **UP-168** platform, that fits both on **PSU-20i** orbital shaker and in **ES-20/60, ES-20/80** Shakers-Incubators.



**TR-44/15**  
BS-010135-LK  
rack

Adjustable angle test tube rack for UP-168



**TR-21/50**  
BS-010135-KK  
rack

Adjustable angle test tube rack for UP-168



**FC-50**  
BS-010126-MK  
clamp

Clamp 50 ml - Ø50 mm for UP-168



**FC-100**  
BS-010126-HK  
clamp

Clamp 100 ml - Ø65 mm for UP-168



**FC-250**  
BS-010126-JK  
clamp

Clamp 250 ml - Ø85 mm for UP-168



**FC-500**  
BS-010126-LK  
clamp

Clamp 500 ml - Ø105 mm for UP-168



**FC-1000**  
BS-010126-1K  
clamp

Clamp 1000 ml - Ø130 mm for UP-168



**HSC-50**  
BS-010167-DK  
clamp

Tight fit clamp 50 ml - Ø50 mm for UP-168



**HSC-100**  
BS-010167-EK  
clamp

Tight fit clamp 100 ml - Ø65 mm for UP-168



**HSC-250**  
BS-010167-FK  
clamp

Tight fit clamp 250 ml - Ø85 mm for UP-168



**HSC-500**  
BS-010167-JK  
clamp

Tight fit clamp 500 ml - Ø105 mm for UP-168



**HSC-1000**  
BS-010167-1K  
clamp

Tight fit clamp 1000 ml - Ø130 mm for UP-168



**FC-2000**  
BS-010126-NK  
clamp

Clamp 2000 ml - Ø165 mm for UP-168  
Max. - 200 rpm



**ES-20/60**  
Without platform  
Orbital Shaker-Incubator

Orbital Shaker-Incubator **ES-20/60** for biotechnological and pharmaceutical laboratories is a professional category equipment designed for cultivation of microorganisms and eukaryotic cells including animal, plant and insect cells. It is also ...

[read more](#)



**ES-20/80**  
Software included, without platform  
Orbital Shaker-Incubator

**ES-20/80** shaker-incubator for biotechnological and pharmaceutical laboratories is a professional category equipment. The typical applications include - microbial and cell culture cultivation, protein expression, solubility studies, general mixing, as well ...

[read more](#)



**ES-20/80C**  
Software included, without platform  
Orbital Shaker-Incubator with cooling

**ES-20/80C** shaker-incubator for biotechnological and pharmaceutical laboratories is a professional category equipment. The typical applications include - microbial and cell culture cultivation, protein expression, solubility studies, general mixing, as well ...

[read more](#)



**PSU-20i**  
Without platform  
Multifunctional Orbital Shaker

Shaker **PSU-20i** provides three motion types: orbital, reciprocal and vibrating, which can be performed separately, pairwise and sequentially in repeated cycles. Shaker is designed for applications both in small specialized ...

[read more](#)