

P-6/1000, platform

DESCRIPTION

Platform with clamps for flasks.

SPECIFICATIONS

| | |
|------------------|--------------|
| Working area | 360 × 400 mm |
| Flask volume | 1000 ml |
| Number of clamps | 6 |

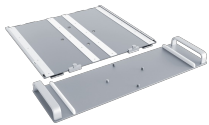


CAT. NUMBER

BS-010135-DK

Platform P-6/1000

ACCESSORIES



P-EX
BS-010173-CK
platform exchange set

Platform Exchange Set allows for faster replacement of flat platforms. Thanks to the platform sliding system, it is now possible to install 4 × 2l flasks in ES-20/60, ES-20/80, ES-20/80C ...

[read more](#)



ES-20/60
Without platform
Orbital Shaker-Incubator

Orbital Shaker-Incubator ES-20/60 for biotechnological and pharmaceutical laboratories is a professional category equipment designed for cultivation of microorganisms and eukaryotic cells including animal, plant and insect cells. It is also ...

[read more](#)



PSU-20i
Without platform
Multifunctional Orbital Shaker

Shaker PSU-20i provides three motion types: orbital, reciprocal and vibrating, which can be performed separately, pairwise and sequentially in repeated cycles. Shaker is designed for applications both in small specialized ...

[read more](#)