

# P-16/250, platform

## DESCRIPTION

Platform with clamps for flasks.

## SPECIFICATIONS

Working area	360 × 400 mm
Flask volume	250-300 ml
Number of clamps	16

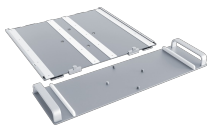


## CAT. NUMBER

BS-010135-CK

Platform P-16/250

## ACCESSORIES



**P-EX**  
BS-010173-CK  
platform exchange set

Platform Exchange Set allows for faster replacement of flat platforms. Thanks to the platform sliding system, it is now possible to install 4 × 21 flasks in ES-20/60, ES-20/80, ES-20/80C ...

[read more](#)



**ES-20/60**  
Without platform  
Orbital Shaker-Incubator

Orbital Shaker-Incubator ES-20/60 for biotechnological and pharmaceutical laboratories is a professional category equipment designed for cultivation of microorganisms and eukaryotic cells including animal, plant and insect cells. It is also ...

[read more](#)



**PSU-20i**  
Without platform  
Multifunctional Orbital Shaker

Shaker PSU-20i provides three motion types: orbital, reciprocal and vibrating, which can be performed separately, pairwise and sequentially in repeated cycles. Shaker is designed for applications both in small specialized ...

[read more](#)