

## CH 3-150, Heating and cooling thermostat, Combitherm-2



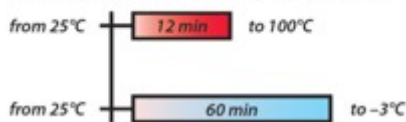
### DESCRIPTION

Combitherm-2 **CH 3-150** is specially designed to thermostabilise materials at temperatures from  $-3^{\circ}\text{C}$  to  $+150^{\circ}\text{C}$  according to methods of analysis. To obtain useful functionality and decrease foot-print of instruments Combitherm-2 consists of 2 independent cooling and heating plug-in thermoblocks combined in a common electronic circuit board as well as inside a common external body. The left part of the front keyboard is responsible for setting parameters for cooling plug-in blocks and the right part — for heating plug-in blocks. Both of them are regulated independently and can realize up to 16 programs including temperature and time in each program. Peltier technology is used for cooling below room temperature; PCB is used for heating till  $+150^{\circ}\text{C}$ .

Separation of cooling and heating parts from each other increases durability of the instrument and speed of temperature changing after setting a new program.

#### Different block types can be provided on request

Heat up and cool down times for CH3-150



### SPECIFICATION

Heating block Temperature setting range	$+25^{\circ}\text{C} \dots +150^{\circ}\text{C}$
Heating block Temperature control range	$5^{\circ}\text{C}$ above ambient ... $+150^{\circ}\text{C}$
Heating block Setting resolution	$1^{\circ}\text{C}$
Heating block Stability	$\pm 0.1^{\circ}\text{C}$
Temperature calibration coefficient range	$0.936 \dots 1.063 (\pm 0.063)$
---	---
Cooling block Temperature setting range	$-3^{\circ}\text{C} \dots +20^{\circ}\text{C}$
Cooling block Temperature control range	$23^{\circ}\text{C}$ below ambient ... $5^{\circ}\text{C}$ below ambient
Cooling block Setting resolution	$0.1^{\circ}\text{C}$
Cooling block Stability	$\pm 0.1^{\circ}\text{C}$
----	----
Digital time setting	1 min-99 hrs 59 min (increment 1 min)
User adjustable programs (temperature and time)	16 (heating) + 16 (cooling)
Display	LCD



### CAT. NR.

	CH 3-150 without blocks
BS-010418-AAA	230VAC 50/60Hz Euro plug
-----	<b>Optional accessories</b>
BS-010418-AK	B2-50
BS-010418-BK	B10-16
BS-010418-CK	B6-25
BS-010418-DK	B23-1.5
BS-010418-EK	B18-12
BS-010418-LK	B10-13
BS-010418-KK	B5-29
-----	
BS-010418-NK	IQ OQ document
BS-010418-OK	PQ document

## CH 3-150, Heating and cooling thermostat, Combitherm-2

Premium  
Product Class

Overall dimensions (WxDxH)	295x285x220 mm
Weight	5.6 kg
Power supply	230 V, 50/60 Hz
Input current/power consumption	1.8 A / 430W



### ACCESSORIES



**B23-1.5**  
23 sockets for 1.5 ml microtest tubes depth 35 mm



**B10-16**  
Ø16 mm x 10 sockets depth 56 mm



**B6-25**  
Ø25 mm x 6 sockets depth 40 mm



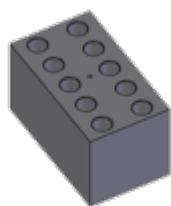
**B2-50**  
Ø48 mm x 2 sockets depth 58 mm

## CH 3-150, Heating and cooling thermostat, Combitherm-2



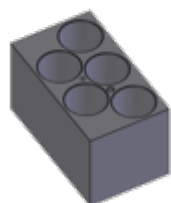
### **B18-12**

18 sockets for  $\varnothing 12 \times 75$  mm round bottom tubes, depth 58 mm



### **B10-13**

$\varnothing 13$  mm x 10 sockets, flat bottom, depth 30 mm



### **B5-29**

$\varnothing 29$  mm x 5 sockets, flat bottom, depth 40 mm